

HYATT REGENCY YOKOHAMA
 〒231-0023
 280-1,2 Yamashita-cho, Naka Ward,
 Yokohama, Kanagawa, Japan
 T+ 81 45 222 0100
 hyattregencyyokohama.com
 yokohama.regency@hyatt.com



CAPACITY CHART

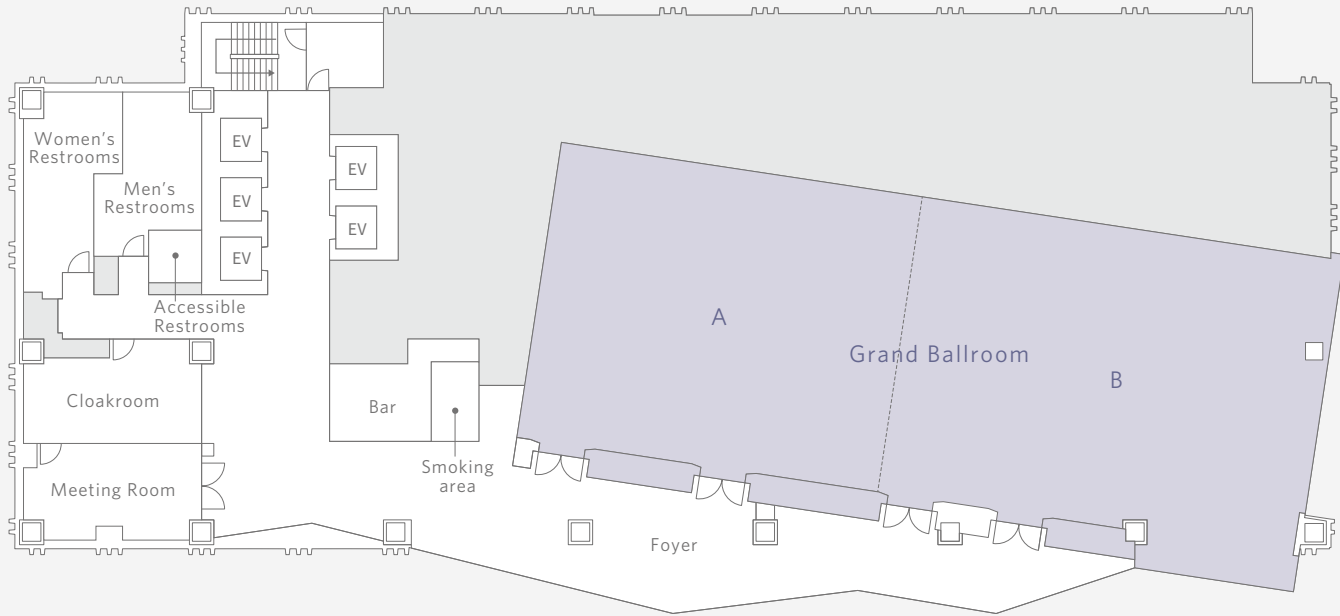


Room Name	Room Dimensions L x W x H (m)	Room Size Sq. M.	Banquet	Reception	Theater	Classroom	Boardroom	U-Shape	Hallow Square
20F									
Grand Ballroom Full Span	13 x 34.2 x 4.5	460	192	220	368	204	200	70	80
Grand Ballroom A	13 x 13.1 x 4.5	172	64	80	114	54	56	30	40
Grand Ballroom B	13 x 18.5 x 4.5	253	72	90	146	84	84	38	48
Meeting Room	8 x 4.5 x 3.5	36	—	—	18	—	12	—	—
21F									
Sky Banquet	8.3 x 16 x 2.5	137	64	60	89	42	40	26	32
The Drawing Room A	8.3 x 4.2 x 2.6	35	—	—	18	—	12	—	—
The Drawing Room B	8.3 x 4.2 x 2.6	35	—	—	18	—	12	—	—
Private Room A	4.4 x 3.9 x 2.6	17	—	—	—	—	6	—	—
Private Room B	4.5 x 3.9 x 2.6	18	—	—	—	—	6	—	—
Private Room C	3.2 x 3.9 x 2.6	14	—	—	—	—	6	—	—
Bride's Room A	3.0 x 5.7 x 2.6	17	—	—	—	—	6	—	—
Bride's Room B	3.0 x 4.3 x 2.6	13	—	—	—	—	6	—	—
Bride's Room C	3.0 x 4.3 x 2.6	13	—	—	—	—	6	—	—
Bride's Room D	3.0 x 4.3 x 2.6	13	—	—	—	—	6	—	—

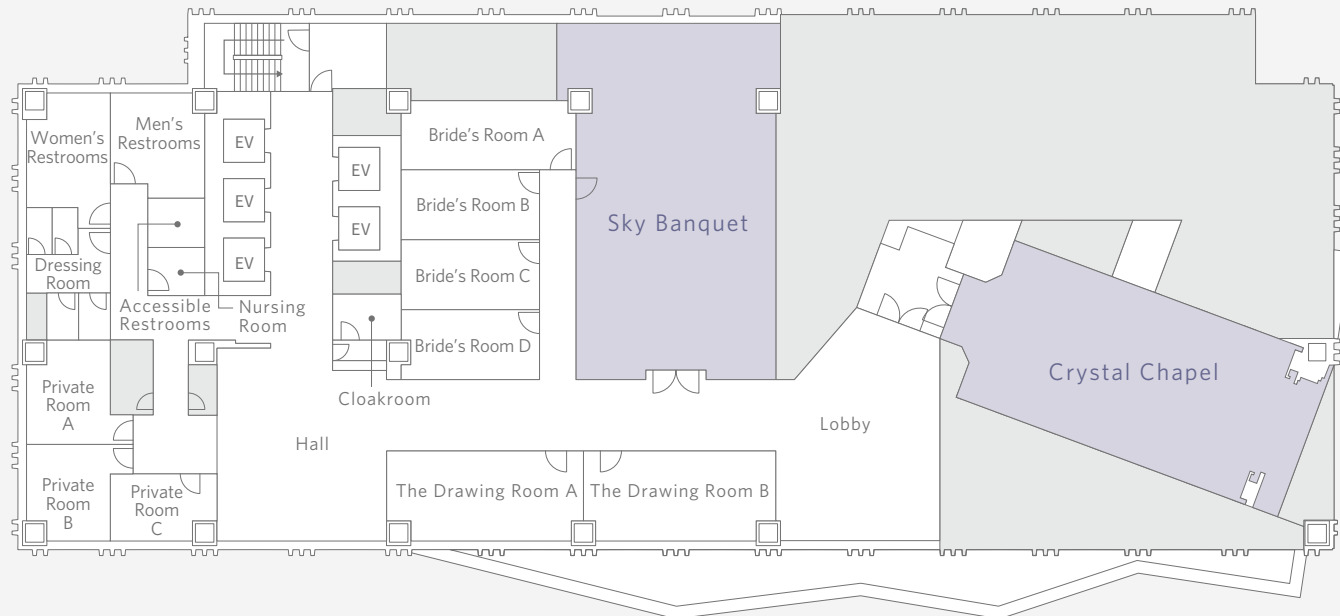
HYATT REGENCY YOKOHAMA
 〒231-0023
 280-1,2 Yamashita-cho, Naka Ward,
 Yokohama, Kanagawa, Japan
 T+ 81 45 222 0100
 hyattregencyyokohama.com
 yokohama.regency@hyatt.com



FLOOR PLAN
 20F



FLOOR PLAN
 21F



HYATT REGENCY YOKOHAMA
 〒231-0023
 280-1,2 Yamashita-cho, Naka Ward,
 Yokohama, Kanagawa, Japan
 T+ 81 45 222 0100
 hyattregencyyokohama.com
 yokohama.regency@hyatt.com



ACCOMMODATIONS

Dynamic city and historical gateway to Japan, Yokohama is a unique destination, vacillating between an ultra-modern culture and a tranquil nostalgic atmosphere. The Hyatt Regency Yokohama invites its guests to a vibrant, cosmopolite environment inspired by Yokohama's history of creativity, openness, multiculturalism, and innovation. Ideally located between the bustling Chinatown the Yamashita Park and Motomachi main shopping street, the Hyatt Regency Yokohama is the perfect venue for business and tourists' travelers.

HOTEL FACILITIES

21 floors/315 rooms and suites/3 restaurants and bar/Fitness center/Regency club lounge/Wedding Chapel and Bridal salon/2 banquet facilities/Parking slot/2 accessible rooms

ROOMS

The 21 floors hotel features 295 standard rooms, 18 suites and two accessible rooms; all of our rooms are non-smoking. An open wash basin and wardrobes are designed to create a connection throughout the guest room. Bringing simple and sophisticated design, we incorporated the regional idea into the Headboard-Japanese folding screen-and the pattern of carpet. Combining an atmosphere of authentic Japan with stylish design, many of the 315 guest rooms bring about the best in comfort and convenience.

AMENITIES

- Complimentary high speed Internet access (Wi Fi)
- LCD Television
- Safety Box
- Full bath amenities
- USB Port
- Individually controlled heat and air conditioning
- Alarm Clock
- Coffee maker
- Laundry service

RESTAURANTS AND BARS

- Milano Grill: It is a classical Western-styled Italian restaurant that entertains guests in a calm and sophisticated atmosphere.
- Harbor Kitchen (all day dining): It is perfect for entertainment guests with the bright and lively design with the image of a cruise ship. The Harbor Kitchen offers breakfast, lunch and weekend brunch buffets, serving the finest and freshest seasonal and ingredients.
- THE UNION BAR & LOUNGE: offers a wide range of wines from all over the world. It also offers inventive cocktails and premium spirits and beers. Create your own meaningful connections in modern spaces designed for socializing.

MEETINGS AND EVENT FACILITIES

The Hyatt Regency Yokohama is the perfect environment for banquets, seminars as well as private parties and wedding venues.

- Grand Ballroom (460 square meters): Situated on the 20th floor, the Grand Ballroom offers a stunning view over the Harbor and the Yokohama Bridge. The room can be separated upon guests' convenience.
- Sky Banquet (137 square meters): Situated on the 21th floor, has a show kitchen that provides culinary entertainment and an array of innovative event styles. The kitchen is equipped with an automatic door that can be opened during an event for a dramatic effect and the wooden floors create a classic yet fresh look.
- Fully equipped with business wifi.

LOCATION

Yokohama is the second most populous metropolis in Japan, a Metropolis where Asian and Western cultures met to create a formidable atmosphere unique in Japan. Historical gathering point of Asian and Western foreigners, the city quickly became a hub for innovation and multiculturalism. Ideally located between the bustling Chinatown the Yamashita Park and Motomachi main shopping street, the Hyatt Regency Yokohama is the perfect venue for business and tourists' travelers.

TRANSPORTATION

- By Train
 - About 3 minutes walk from Nippon Odori station on the Minato Mirai Line.
 - About 5 minutes walk from Motomachi Chukagai station on the Minato Mirai Line.
 - About 15 minutes walk from Kannai station on the JR line.
- From Haneda Airport
 - 40 minutes by Airport Limousine Bus to Art theater(Geijutsugekijou)-NHK-mae.
 - 28 minutes by Keikyū Line to Yokohama Station, 10 minutes by train from Yokohama station(Minato Mirai Line).
- From Narita Airport
 - 90 minutes by Airport Limousine Bus to YCAT (Yokohama City Air Terminal), 10 minutes by Minato Mirai Line to Nippon Odori Station.
 - 90 minutes by Narita Express Train to Yokohama Station, 10 minutes by Minato Mirai Line to Nippon Odori Station.
- By Car
 - By Metropolitan Expressway Yokohane Line(from Tokyo/Haneda) About 3 minutes from the Yokohama Park Ramp
 - By Metropolitan Expressway (from Yokohama Bay Bridge/Aqua Line) About 5 minutes from the Shin Yamashita Ramp
 - By Metropolitan Expressway Kariba Line (from the Tomei Expressway Yokohama-Machida Interchange/Hodogaya Bypass/Kariba) About 5 minutes from the Shin Yamashita Ramp
- Parking
 - The multi-level parking structure provides direct access to the hotel.
 - Capacity : 108
 - Fee : ¥1,500/Overnight

POINTS OF INTEREST

- Yokohama Chinatown
- Yamashita Park
- Minato Mirai Area
- Yokohama Landmark Tower
- Yokohama Red Brick Warehouse
- Yokohama Stadium
- Sankeien Garden
- PACIFICO Yokohama
- Osanbashi
- Harbor View Hill Park

